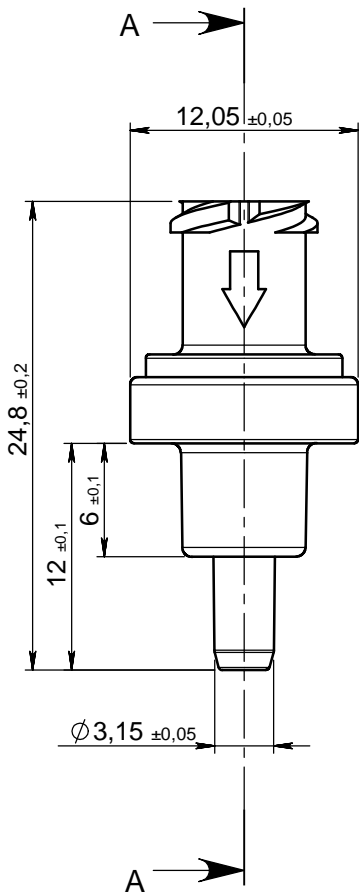


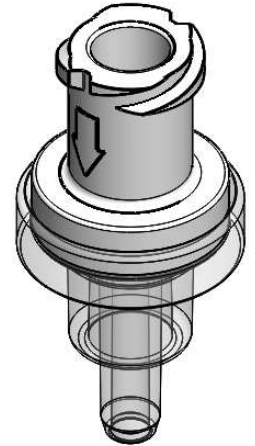
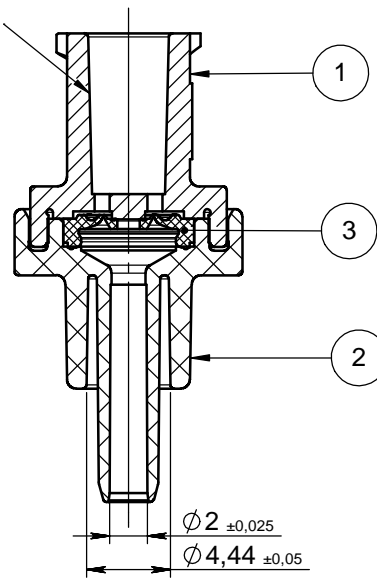
ECHELLE: 1:1



Sens du fluide

COUPE A-A

Luer lock female ISO 594



NOTA:

Rep	Matière	Code matière
1	SAN +Colorant blanc	M0376+M0507
2	ABS transparent	M0480
3	Silicone/ Elastosil	M0256

Checkvalve in stand by position:	Closed
Maximum retrograde leakrate:	≤ 0.1ml/h at a flow rate of 0.5ml/h
Position of use:	Independent
Priming:	Airbubbles completely removable
Crack pressure:	≤ 12 mBar
Crack pressure after back pressure of 6 bar for 15 min:	≤ 20 mBar
Maximum back pressure:	6 Bar
Burst pressure (at room temperature in flow direction for 15 seconds air overpressure):	6 Bar
Flowrate with infusion set according to DIN 58 362 with Glucose 40%:	≥ 90 ml/ min
Sterilization :	ETO-Gas, γ-irradiation up to 50 kGy

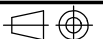
1	21/01/2013	BOUJMADA	Ajout code matière M0376 et M0480, Matière Colorant M0507, Code M114 devient M0256, mise à jour désignation et mise au format SW	FOR021 : 4570
0	27/02/2008	BOUCHARD	Création	
Rev.	Date	Designer	Modifications	N° Fiche FOR073 ou FOR021

Normes : ISO 594 -2

Matière : VOIR NOTA

P. 1 / 1

Echelle : 5:2



Code matière : VOIR NOTA

Revision : 1

Format : A4

Reference : PBP20053

Designation :

VALVE ABS BLANC - PRESSION OUVERTURE 12Mbar - LLF - Ø 3x4.1mm

Tolérances générales :

Unités : mm, °, grs

PROMEPLA

FOR035-1